

IGLOO TECNOPOLIMERO

Design Mark Robson con Luisa Battaglia



2639 81



2639 11

Poltrona in tecnopolimero lucido.
Impilabile.
Per uso interno/esterno.

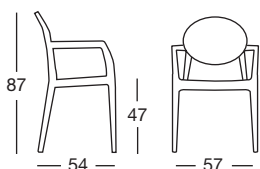
Glossy technopolymer armchair.
Stackable.
For indoor/outdoor use.

COLORI COLOURS



11
lino
linen

81
antracite
anthracite grey



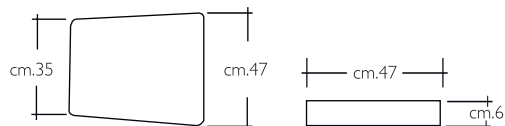
Art. 2639

Imballo: 4 pezzi
Packing: 4 pieces

Peso unitario Kg 3,600
Unit weight

Misure imballo 73,5x59x107 cm
Packing sizes

CUSCINO PER IGLOO CUSHION FOR IGLOO



Art. 1505

Cuscino tessile imbottito da fissare con strisce in velcro.
Stuffed textile cushion fixable with velcro.

Imballo: 2 pezzi
Packing: 2 pieces

Peso unitario Kg 0,500
Unit weight

Misure imballo 51x47x7,5 cm
Packing sizes

TESSUTI E COLORI FABRICS AND COLOURS

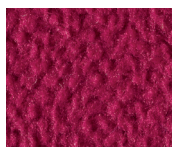
VELLUTINO / VELVET



01 Cammello
Camel



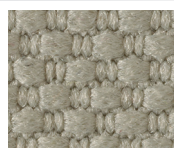
02 Arancio
Orange



03 Magenta
Magenta



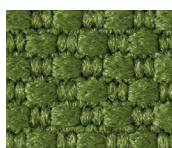
TRAMATO / WOVEN



11 Sabbia
Sand



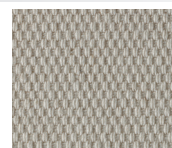
12 Arancio
Orange



13 Verde cedro
Lime green



COTONE PANAMA / COTTON PANAMA



21 Ecrù
Ecru



made in Italy

SCAB DESIGN
since 1957

Sede/Headquarters: 25030 Coccaglio (BS) Italy - Via G. Monauni, 12
Divisione Commerciale Italia: Tel. 0307718.760/765/770 - Fax 0307718.777
www.scabdesign.it - e-mail: italia@scab.it
Export Department: Phone +390307718.720/725/726 - Fax +390307718.700
www.scabitaly.com - e-mail: export@scabitaly.com